



ISSN: 0976-3031

Available Online at <http://www.recentscientific.com>

CODEN: IJRSFP (USA)

International Journal of Recent Scientific Research  
Vol. 9, Issue, 12(D), pp. 30021-30025, December, 2018

**International Journal of  
Recent Scientific  
Research**

DOI: 10.24327/IJRSR

## Research Article

# IN VITRO STUDY OF INHIBITORY EFFECT OF *ALPINIA PURPURATA* LEAVES EXTRACT ON STRUVITE CRYSTALS

Smrethe R<sup>1</sup>, Raguraj S<sup>1</sup>, Jenovin Donald J<sup>1</sup>, Sangeetha M.T<sup>1</sup>, Sentil P.T<sup>1</sup>,  
Sujitha M<sup>1</sup> and Manjula K<sup>2</sup>

<sup>1</sup>Department of Biotechnology, Sri Shakthi Institute of Engineering and Technology,  
Coimbatore-641 062, Tamilnadu, India

<sup>2</sup>Bio Techno Solutions Training and Research Institute, Trichy-620020, Tamilnadu, India

DOI: <http://dx.doi.org/10.24327/ijrsr.2018.0912.2978>

### ARTICLE INFO

#### Article History:

Received 4<sup>th</sup> September, 2018  
Received in revised form 25<sup>th</sup>  
October, 2018  
Accepted 18<sup>th</sup> November, 2018  
Published online 28<sup>th</sup> December, 2018

#### Key Words:

Struvite, *Alpinia purpurata* leaves, Fourier Transform Infrared Spectroscopy (FTIR), Powder X-Ray diffraction (XRD).

### ABSTRACT

**Objective:** To investigate the inhibitory effect of methanol extract of *Alpinia purpurata* leaves on the growth of struvite crystals.

**Methods:** Struvite crystals were grown by the single diffusion gel growth technique and the inhibitory effect of methanol extracts of *Alpinia purpurata* leaves on the growth of struvite crystals has been studied. The grown crystals were characterized by Fourier Transform Infrared Spectroscopy (FTIR) and Powder X-Ray diffraction (XRD) methods for further confirmations.

**Results:** With an increase in the concentration of methanol extract of *Alpinia purpurata* leaves, the weight of the formed crystals were gradually reduced from 2.93 g to 0.74 g in struvite crystals, respectively. The crystals are harvested from the struvite were characterized by Fourier Transform Infrared Spectroscopy (FTIR) to confirm the functional groups and Powder X-Ray Diffraction technique (XRD) analysis to confirm the crystalline phases of the struvite crystals. Results obtained are indicated that *Alpinia purpurata* leaves have the potential to inhibit the formation of struvite crystals.

**Conclusion:** This study confirms that using methanol extract of leaves of *Alpinia purpurata* can promote the formation of ammonium magnesium phosphate hexahydrate crystals and reduce the nucleation rate of struvite crystals, a major component of triple phosphate urinary stone.

Copyright © Smrethe R et al, 2018, this is an open-access article distributed under the terms of the Creative Commons Attribution License, which permits unrestricted use, distribution and reproduction in any medium, provided the original work is properly cited.

## INTRODUCTION

A large number of people are suffering from urinary stones problems [1]. Urinary stones have been found to contain calcium phosphate, calcium oxalate, uric acid and magnesium ammonium phosphate or struvite crystals [2-4]. Among the magnesium phosphates, namely, Ammonium Magnesium Phosphate Hexahydrate (AMPH) commonly known as Struvite and Magnesium Hydrogen Phosphate Trihydrate have also been reported to occur as constituents in renal calculi [5-8] not only in adults but also in children [9, 10]. Struvite calculi, found in 15-20% of urinary calculi [11, 12], are mostly related to urinary tract infections with ureolithic microorganisms in humans and animals [5, 13, 14]. Struvite is also known as triple phosphate stone, infection stone or urase stone. They are found more frequently in women and in persons older than 50 years [15, 16, 17]. Urinary stones are characterized by high recurrence rate therefore requiring a preventive treatment by using the medicinal plants [18, 19].

*Alpinia purpurata* (Vieill.) K. Schum (red ginger) is a herbaceous perennial plant, internationally known in the ornamental plant market as potted plant, landscape accent and cut flower [20]. The rhizome has sharp odour, which could improve appetite, taste and voice. It is also used for headache, rheumatism, sore throat and renal disease [21]. The plant possesses moderate antibacterial and anticancer activities, which may be due to the presence of secondary metabolites in the leaves of *A. purpurata* [22]. In addition to the proposed anti-inflammatory activity, its phytomedicinal potential to treat tuberculosis is also described [23]. The chemical constituents shows that the presence of volatile oil, chiefly sesquiterpene, hydrocarbons, sesquiterpene alcohols, gingerole, starch, tannins flavonoids like galangin [24-27]. In the present investigation, the effects of methanol extract of *Alpinia purpurata* leaves are used as additives to induce the nucleation and growth of struvite crystals by single diffusion gel growth technique and are reported for the first time. This study

\*Corresponding author: Smrethe R

Department of Biotechnology, Sri Shakthi Institute of Engineering and Technology, Coimbatore-641 062, Tamilnadu, India

incorporated a multidisciplinary approach in characterizing struvite crystals grown *in vitro* to help formulate prevention or dissolution strategies in controlling urinary stone growth.

## MATERIALS AND METHODS

### Materials and instruments

Analytical grade of anhydrous methanol, calcium chloride, magnesium acetate, oxalic acid, sodium metasilicate, ammonium dihydrogen phosphate were all purchased from sigma-aldrich, New Delhi, India. Fourier Transform Infrared (FTIR) spectra were recorded with a nominal resolution of 4  $\text{cm}^{-1}$  and a wave number range from 400 to 4000  $\text{cm}^{-1}$  using the KBr pellet technique. Powder X-Ray Diffraction (XRD) was performed with a PW1710 based type set up using  $\text{CuK}\alpha$  radiation.

### Collection of plant material

The *Alpinia purpurata* leaves were collected in the month of June from the bishop heber college, Trichy, Tamil Nadu, India. The plant was identified and confirmed by Dr. S. John Britto, Director, Rapinat herbarium, St. Joseph College, Tiruchirapalli, Tamil Nadu. The voucher specimen number PP001 dated 25.08.2017.

### Preparation of methanol extracts

The *Alpinia purpurata* leaves were washed in running water, cut into small pieces and then shade dried for a week at 35-40°C, after that it was grinded to a uniform powder of 40 mesh size [6]. The methanol extracts were prepared by soaking 100 g of the dried powder plant materials in 1 L of methanol by using a soxhlet extractor continuously for 10 hr. The extracts were filtered through whatmann filter paper No. 42 (125mm). The filtered extract was concentrated and dried by using a rotary evaporator under reduced pressure. The obtained residue 1.8 g (leaves) was used to prepare the series (0.15, 0.25, 0.50, 0.75 and 1.0%) of methanol supernatant concentrations for *in vitro* studies (table 1).

### Growth and characterization of Struvite crystals

Glass test tubes were used as a crystallization apparatus and the single diffusion reaction technique was employed [28, 29]. One of the reactants, 0.5 M ammonium dihydrogen phosphate (ADP), was mixed with sodium metasilicate solution the density of 1.04g/cm<sup>3</sup> at pH9.4, so that the pH of the mixture was maintained at 6 and left undisturbed for 2-3 days. After gelation took place, the supernatant solution of 1 M Magnesium acetate was gently poured onto the set gel in various test tubes. After pouring on each supernatant solution, the test tubes were capped with airtight stopples. The experiments were conducted at room temperature (37°C). The grown Struvite crystals were characterized using FTIR to verify the compound and structure of the grown crystal. FTIR was performed by Hitachi 570 FT-IR spectrophotometer technique to verify the proper formation of crystal and their purity [30].

**Table 1** Supernatant solutions added to the set gels for struvite crystals.

Supernatant Solutions (SS) (Groups and Treatments)	Compositions
I (Control)	10 ml of 1 M magnesium acetate
II (Distilled water)	5 ml of 1 M magnesium acetate +5 ml of distilled water
III (0.15% methanol extract)	5 ml of 1 M magnesium acetate +5 ml of 0.15% of methanol extract of <i>Alpinia purpurata</i> leaves separately
IV (0.25% methanol extract)	5 ml of 1 M magnesium acetate +5 ml of 0.25% of methanol extract of <i>Alpinia purpurata</i> leaves separately
V(0.50% methanol extract)	5 ml of 1 M magnesium acetate +5 ml of 0.50% of methanol extract of <i>Alpinia purpurata</i> leaves separately
VI(0.75% methanol extract)	5 ml of 1 M magnesium acetate +5 ml of 0.75% of methanol extract of <i>Alpinia purpurata</i> leaves separately
VII(1.00% methanol extract)	5 ml of 1 M magnesium acetate +5 ml of 1.00% of methanol extract of <i>Alpinia purpurata</i> leaves separately

### The nomenclature of different additive solution on the growth of CHPD crystals

An attempt was made to study the effect of the methanol extract of *Alpinia purpurata* leaves on the growth of struvite crystals in gel method. The supernatant solutions as given in (table 1) were added to the set gels and the results were noted. The experiments were repeated four times, to study the effect of the aqueous extract of five medicinal plants on the growth of Struvite crystals, a series of five different concentrations of 0.15, 0.25, 0.50, 0.75 and 1.00% of these each plant extracts were added in equal amounts in supernatant solution and the average weight of the grown crystal were measured.

### Statistical analysis

The masses of the crystals (gm) are presented as the mean  $\pm$ standard deviation for the control and treatment samples. One-way analysis of variance (ANOVA) followed by tukey's test for multiple comparisons were made between groups. Values of  $p < 0.05$  was considered to be significant.

## RESULTS AND DISCUSSIONS

### Effect of Alpinia purpurata leaves on struvite crystals

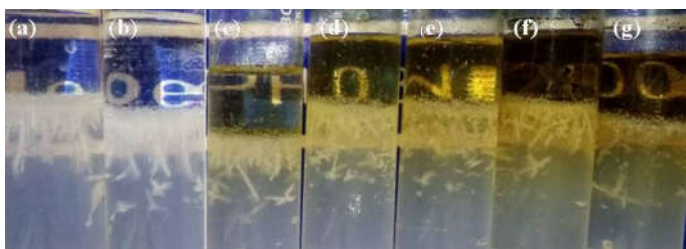
The effect of *Alpinia purpurata* leaves on nucleation and crystallization characteristics of struvite crystals is determined by measuring the weight of the formed crystals. In the gel method, the control using pure  $\text{Mg CH}_3\text{COO}_2 \cdot 4\text{H}_2\text{O}$  led to the maximum nucleation of crystals growth within 24 h of adding the supernatant solutions Fig. 1 (1a). In the presence of *Alpinia purpurata* leaves, nucleation was delayed and reduced masses of the crystals were observed 96 h after adding the supernatant solutions Fig. 1 (1b-g). Morphology of the harvested crystals after addition of *Alpinia purpurata* leaves as shown in Fig. 2. The largest single struvite crystals having dimensions of 3.2 cm as observed in (Fig. 3a). The sizes of the struvite crystals were reduced from 3.2 cm to 0.9 cm at 1% concentration of extracts was observed in (Fig. 3c-g). With an increase in the concentration of *Alpinia purpurata* leaves from 0.15% to 1% (v/v), the weight of the formed crystals was gradually reduced from 2.93 g to 0.74 g at 5% concentration respectively. The ANOVA statistical analysis was performed and different parameters have been evaluated, and  $p < 0.05$  has suggested that the correlation is significant as shown in (Table 2).

Recently, growth inhibition studies of Struvite crystals in the presence of some of the herbal extracts [17,18,31] were attempted in literature. In the present work, Struvite crystals growth was reduced due to the inhibitory effect of *Alpinia purpurata* leaves under *in vitro* conditions. This result indicates that distilled water did not show any inhibitory activity with regard to crystal growth, whereas the methanol extract of *Alpinia purpurata* leaves possessed inhibitory activity due to the presence of bioorganic molecules volatile oil, chiefly sesquiterpene, hydrocarbons, sesquiterpene alcohols, gingerole., starch, tannins flavonoids like galangin [24-27].

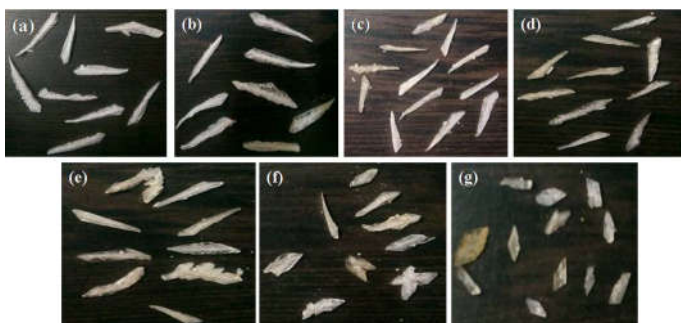
**Table 2** ANOVA statistical analysis for harvested struvite crystals

Crystals	Group	Treatments	Mean (gm)±SD
Struvite	A	Control	2.93±0.014
	B	Control+ Distilled water	2.56±0.057
	C	Control+0.15% extracts	1.97±0.014 <sup>a,b</sup>
	D	Control+0.25% extracts	1.68±0.014 <sup>a,b,c</sup>
	E	Control+0.50% extracts	0.91±0.014 <sup>a,b,c,d</sup>
	F	Control+0.75% extracts	0.88±0.014 <sup>a,b,c,d,e</sup>
	G	Control+1.00% extracts	0.74±0.014 <sup>a,b,c,d,e,f,ns</sup>

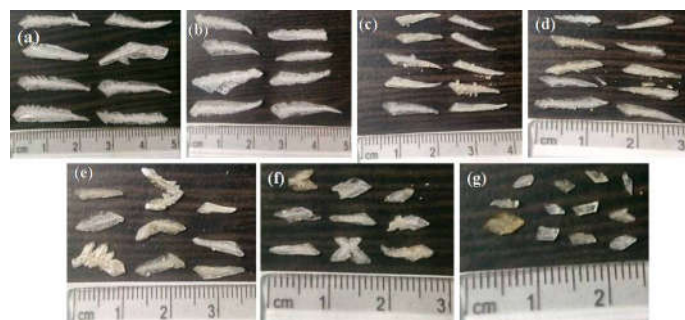
Values represent mean (gm) ± S.D (n=4) Comparisons between means are as follows. a: A vs B-G, b: B vs C-G, c: C vs D-G, d: D vs E-G, e: E vs F-G, f: F vs G. Statistical significance were considered to be <sup>a</sup>p<0.05, <sup>b</sup>p<0.05, <sup>c</sup>p<0.05, <sup>d</sup>p<0.05, <sup>e</sup>p<0.05.



**Fig 1** The effect of *Alpinia purpurata* leaves on struvite crystals in the gel method (a) without any additive (b) with the distilled water (c) with the 0.15% methanol extract (d) with the 0.25% methanol extract (e) with the 0.50% methanol extract (f) with the 0.75% methanol extract (g) with the 1.00% methanol extract after 7 days.



**Fig 2** The harvested crystals of struvite obtained from *Alpinia purpurata* leaves in the gel method (a) without any additive (b) with the distilled water (c) with the 0.15% of methanol extract (d) with the 0.25% of methanol extract (e) with the 0.50% of methanol extract (f) with the 0.75% of methanol extract (g) with the 1.00% of methanol extract.



**Fig 3** The measurement of struvite obtained from *Alpinia purpurata* leaves in the gel method (a) without any additive (b) with the distilled water (c) with the 0.15% of methanol extract (d) with the 0.25% of methanol extract (e) with the 0.50% of methanol extract (f) with the 0.75% of methanol (g) with the 1.00% of methanol extract.

### Characterization of Struvite crystals

The FTIR spectra of Struvite crystals obtained in the presence and absence of the *Alpinia purpurata* leaves are shown in Fig. 4. In fig. 4 (a) without any additive, a strong band at 2358 cm<sup>-1</sup> are due to the antisymmetric and symmetric stretching vibration of NH<sub>4</sub> units. The peak at 1638 cm<sup>-1</sup> is due to HOH deformation of water and the peak at 1441 cm<sup>-1</sup> is due to the HNH deformation modes of NH<sub>4</sub> units. The band at 1007 cm<sup>-1</sup> is due to V<sub>3</sub> antisymmetric stretching vibration and the peak at 757 cm<sup>-1</sup> is due to the water librational and NH<sub>4</sub> rocking modes. The peak at 568 cm<sup>-1</sup> is due to the V<sub>4</sub> bending modes of the PO<sub>4</sub> units. In the presence of 5% extracts Fig. 4(f), a band at and 2360 cm<sup>-1</sup> is due to the antisymmetric and symmetric stretching vibration of NH<sub>4</sub> units. The peak at 1633 cm<sup>-1</sup> is due to HOH deformation of water and the peak at 1440 cm<sup>-1</sup> is due to the HNH deformation modes of NH<sub>4</sub> units. The band at 1004 cm<sup>-1</sup> is due to V<sub>3</sub> antisymmetric stretching vibration and the peak at 758 cm<sup>-1</sup> is due to the water librational and NH<sub>4</sub> rocking modes. The peak at 568 cm<sup>-1</sup> is due to the V<sub>4</sub> bending modes of the PO<sub>4</sub> units.

Several researchers have reported crystallization characterization of struvite crystals using FTIR techniques [17, 31, 32]. The peaks shift from 2358 to 1674 cm<sup>-1</sup> and from 1441 to 1438 cm<sup>-1</sup> for HNH deformation modes of NH<sub>4</sub> units previously reported. The shifting further supports that the lemon juice can promote the formation of ammonium magnesium phosphate hexahydrate crystals and reduces the nucleation rate of struvite crystals as compared with orange juice.

The XRD patterns of struvite crystals obtained in the presence and absence of the methanol extract of *Alpinia purpurata* leaves are shown in (fig. 5). The diffraction peaks obtained were well correlated to the (hkl) indices of struvite phase (JCPDS card number 04-010-2894). The effected *Alpinia purpurata* leaves the nucleation and growth of struvite crystals.

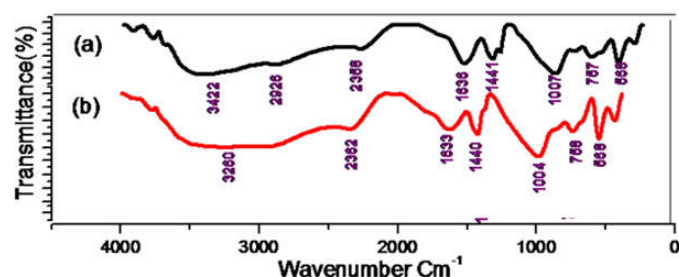


Fig 4 The FTIR spectra of struvite obtained from *Alpinia purpurata* leaves in the gel method (a) without any additive (b) with the 1.00% of methanol extract.

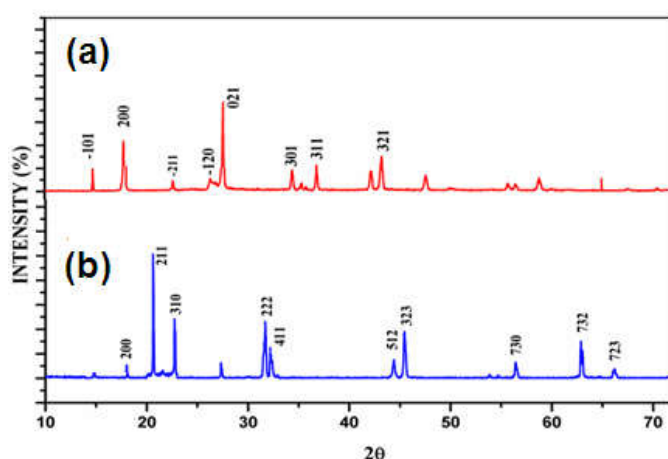


Fig 5 The XRD pattern of struvite obtained from *Alpinia purpurata* leaves in the gel method (a) without any additive (b) with the 1.00% of methanol extract.

## CONCLUSION

Struvite crystals were grown by single diffusion gel growth techniques and characterized by FTIR and Powder XRD techniques for the experimental confirmations of the grown crystal. With an increase in the concentration of methanol extract of *Alpinia purpurata* leaves the weight of the formed crystals were gradually reduced from 2.93 g to 0.74 g in struvite crystals, respectively. FTIR and Powder XRD techniques confirmed its functional groups and crystalline phases of struvite crystals. One way ANOVA performed with treated and untreated crystal growth data obtained from struvite crystals showed significant differences ( $p < 0.05$ ). This study confirmed that the leaves of *Alpinia purpurata* leaves extracts can promote the formation of hydroxyapatite crystals and treat urinary stone by inhibiting the formation of struvite crystals, a major component of triple phosphate urinary stone.

## Acknowledgement

SR acknowledges K.Manjula, Managing Director, Bio Techno Solutions Training and Research Institute, Tiruchirapalli for providing me the infrastructure to carry out the proposed research work. K.V acknowledges Dr. S. John Britto, Director, rapinat herbarium, St. Joseph College, Tiruchirapalli, Tamil Nadu for identifying the plants. SR acknowledges M. Sujitha, Assistant Professor, Sri Shakthi Institute of Engineering and Technology, Coimbatore for constant support for this research.

## Conflicts of Interests

The authors declare that they have no conflict of interest. It has not been published elsewhere. That it has not been simultaneously submitted for publication elsewhere. All authors agree to the submission to the journal.

## Reference

- Mohamed, B., Said, G., Hocine, A., Aissa, B. (2007): Effect of herbal extracts of *Tetraclinis articulata* and *Chamaerops humilis* on calcium oxalate crystals *in vitro*. *Gomal J Med Sci.*, 5 Suppl 2:55-8.
- Tiwari, A., Soni, V., Londhe, V., Brandarkar, A., Bandawanw, D., Nipate, S., (2012): An overview on potent indigenous herbs for urinary tract infirmity: urolithiasis. *Asian J Pharm Clin Res*; 5 Suppl 1:7-12.
- Beghalia, M., Ghalem, S., Allali, H., Belouatek, A., Marouf, A., (2008): Inhibition of calcium oxalate monohydrate crystal growth using Algerian medicinal plants. *J Med Plants Res*; 2 Suppl 3: 066-70
- Aggarwal, S., Tandon, CD., Forouzanveh, M., Simgla, SK., Kiran, R., Jethi, RK., (2000): Role of biomolecules from human renal stone matrix on COM crystal growth. *Mol Cell Biochem*; 210: 109 -19.
- Coe, FL., Parks, JH., Asplin, JR.,(1992): The pathogenesis and treatment of kidney stones. *New Engl J Med*; 327:1141
- Mandel, G., Mandel, N., (1996): Analysis of stones. In: Coe, FL., Favus, MJ., Pak, CYC., Parks, JH., Preminger GM (eds) *Kidney stones*. Lippincott-Raven Publishers, Philadelphia.
- Abbona, F., Boistelle, R., (1979): Growth morphology and crystal habit of Struvite crystals. *J Cryst Growth*; 46:339-354.
- Dao, NQ., Daudon, M., (eds).(1997): *Infrared and Raman spectra of calculi*. Elsevier, Paris.
- Biocic, M., Saraga, M., Cvitkovic Kuzmic, A., Bahtijarevic, Z., Budimir, D., Todoric, J., Majhen Ujevic, R., Pediatric urolithiasis in Croatia. *Coll Antropol*; 27(2):745-752
- Kuvezdic, H., Tucak, A., Peric, N., Prlic, D., Zoric, I., Galic, R., ESWL (2003): treatment of urinary stones in children-the overview of 14 years of experience. *Coll Antropol*; 71:5
- Griffith, DP., (1978): Struvite stones. *Kidney Intl*; 13:372-382
- Griffith, DP., Klein, AS., (1983) Infection-induced urinary stones. In: Roth, RA., Finlayson, B., (eds) *Stones: clinical management of urolithiasis*. The Williams & Wilkins Co., Baltimore; 210-227
- Hesse, A., Heimbach, D., (1999): Causes of phosphate stone formation and the importance of metaphylaxis by urinary acidification: a review. *World J Urol*; 17:308
- Ross, SJ., Osborne, CA., Lulich, JP., Polzin, DJ., Ulrich, LK., Koehler, LA., Bird, KA., Swanson, LL., (1999): Canine and feline nephrolithiasis. Epidemiology, detection, and management. *Vet Clin North Am (Small Anim. Pract.)*; 29:231
- Chauhan, C.K., and Joshi, M.J., (2008): Growth inhibition of Struvite crystals in the presence of juice of *Citrus medica* Linn. *Urol. Res*; DOI: 10.1007/s00240-008-0154-4.
- Priestley, JT., Dunn, JH., (1949): Branched Renal Calculi. *J Urol* ; 61:194
- Chauhan, C.K., Joshi, M.J., and Vaidya, A.D.B., (2008): Growth inhibition of Struvite Crystals in the presence of

- Herbal Extract *Commiphora wightii*. J. Mater Sci. Mater Med.; DOI: 10.1007/s10856-008-3489-z.
18. Fouad, A., Yamina, S., Mostapha, M., Mohammed, A., Brahim, H., (2004): Effect of aqueous extract from *Herniaria hirsute* L. on experimentally nephrolithiasic rats. *J Ethnopharmacol*;95 Suppl 1:87-93.
  19. Bensatal, A., Ouahrani, MR., (2008): Inhibition of crystallization of calcium oxalate by the extraction of *Tamarix gallica* L. *Urol Res*; 36 Suppl 6: 283-7.
  20. Morón, A. (1987): *In vitro* clonal propagation of *Alpinia purpurata* K. Schum (red ginger). Dissertacao (mestrado)-Centro Agronomico Tropical de Investigacion y Ensenanza, Turrialba, Costa Rica.
  21. Prajapathi, ND., Purohit, SS., Arun, KS., Kumar, T. (2003): A Handbook of medicinal plants. A complete source book. India: Agrobios.
  22. Villaflores, OB., Macabeo, APG., Gehle, D., Krohn, K., Franzblau, SG., Anguinaldo, AM. (2010): Phytoconstituents from *Alpinia purpurata* and their *in vitro* inhibitory activity against mycobacterium tuberculosis. *Pharmacogn Mag*, 6(24):339-44.
  23. Raj, CA., Sophia, D., Ragavendran, P., Starlin, T., Rathi, MA., Gopalakrishnan, VK. (2012): Leaf extract of *Alpinia purpurate* (Vieill) K. Schum screened for its Phytochemical constituents and antibacterial and anticancer activities. *Chin J Integr Med*, 10(12):1460-4.
  24. Cheah, PB., Gan, SP., (2000): Antioxidative/Antimicrobial effects of galangal and alpha-tocopherol in minced beef. *J Food Prot*. 63(3): 404-7.
  25. Bisset, N.G., and Wichtl, M., (editors), (2001): Herbal Drugs and Phytopharmaceuticals, 2nd Edn., CRC Press, Boca Raton (USA) p. 218.
  26. Altman, RD., Marcussen, KC., (2001): Effects of a ginger extract on knee pain in patients with osteoarthritis. *Arthritis Rheum*, 44(11): 2531-8.
  27. Warriar, P.K., & Ramankutty, C. (editors), (1994): Indian Medicinal Plants. (1962) Vol I, Orient Longman, Kottakal, India
  28. Chauhan, C.K., and Joshi, M.J., (2008): Growth inhibition of Struvite crystals in the presence of juice of *Citrus medica* Linn. *Urol. Res*; DOI: 10.1007/s00240-008-0154-4.
  29. Chauhan, C.K. Joshi, M.J. and Vaidya, A.D.B., (2008): Growth inhibition of Struvite Crystals in the presence of Herbal Extract *Commiphora wightii*. *J. Mater Sci. Mater Med.*; DOI: 10.1007/s10856-008-3489-z.
  30. Joshi MJ, Chauhan CK, Vaidya, A., (2007): Growth inhibition of Struvite crystals in the presence of herbal extracts of *Rotula aquatica* Lour. Programme book of the 15th international conference on crystal growth, Salt Lake City, Utah, USA; p 114.
  31. Habib, MR., Nikkon, F., Rahman, M., Haque, ME., Karim, MR., (2007): Isolation of stigmaterol and beta-sitosterol from methanolic extract of root bark of *Calotropis gigantea* (Linn). *Pak J Biol Sci* (22):4174-4176.
  32. Joshi, VS., Joshi, MJ., (2003): FTIR spectroscopic, thermal and growth morphological studies of calcium hydrogen phosphate dihydrate crystals. *Cryst Res Technol*; 38: 817-21.

**How to cite this article:**

Smrethe R et al.2018, In Vitro Study of Inhibitory Effect of Alpinia Purpurata Leaves Extract on struvite crystals. *Int J Recent Sci Res*. 9(12), pp. 30021-30025. DOI: <http://dx.doi.org/10.24327/ijrsr.2018.0912.2978>

\*\*\*\*\*